

Safety for passenger elevation

In accordance with the requirements of DIN EN1808, each winch used for passenger elevation must feature a safety system on an independent safety rope. The product offering provides two different safety catching devices for two common applications.

Both types have been approved for passenger elevation and comply with standard DIN EN1808

“Safety requirements on suspended access equipment”.

In addition, the catching devices have been certified by an independent inspection institute (DGUV).



Safety hand wheel

In an emergency (power failure), upward movement with released brake is possible by means of the hand wheel included in the supply (standard delivery scope only for winches for passenger elevation application).

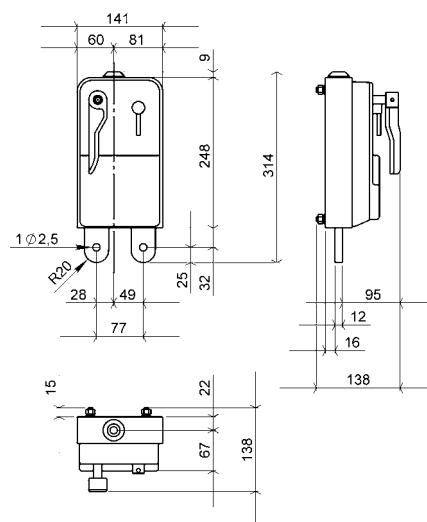


Safety lowering mechanism

In the event of a power failure, the electro-mechanical brake can be released manually in order to ensure safe and controlled lowering of the load. Safe lowering is guaranteed by the integrated centrifugal force brake.

Overspeed safety catching device (YOSL)

This overspeed catching device is automatically tripped when the lowering speed exceeds 30 m/min (0.5 m/s). The integrated clamping jaw mechanism of hardened steel stops the lowering movement of the system within a few centimetres.



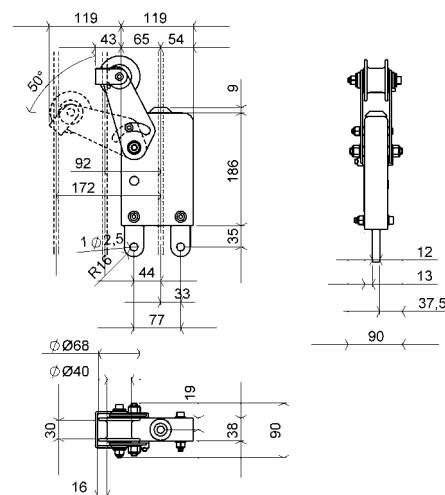
Model	EAN-No. 4025092*	Capacity kg	for rope diameter mm
YOSL6-8	*582803	500	8.4
YOSL6-8	*582803	600	8.4
YOSL8-9	*582742	800	9.0
YOSL10-10	*582766	1000	10.2

Inclined position safety catching device (YISL)

This inclined position catching device is automatically tripped when the angle of the rope or the platform exceeds 5°.

The integrated clamping jaw mechanism holds the rope and immediately stops the movement of the system.

- Robust sheet-steel enclosure
- Clamping mechanism of hardened steel
- Attachment with two screws (M12) or load pins (12 mm)



Model	EAN-No. 4025092*	Capacity kg	for rope diameter mm
YISL6-8	*582827	500	8.4
YISL6-8	*582827	600	8.4
YISL8-9	*582759	800	9.0
YISL10-10	*582797	1000	10.2